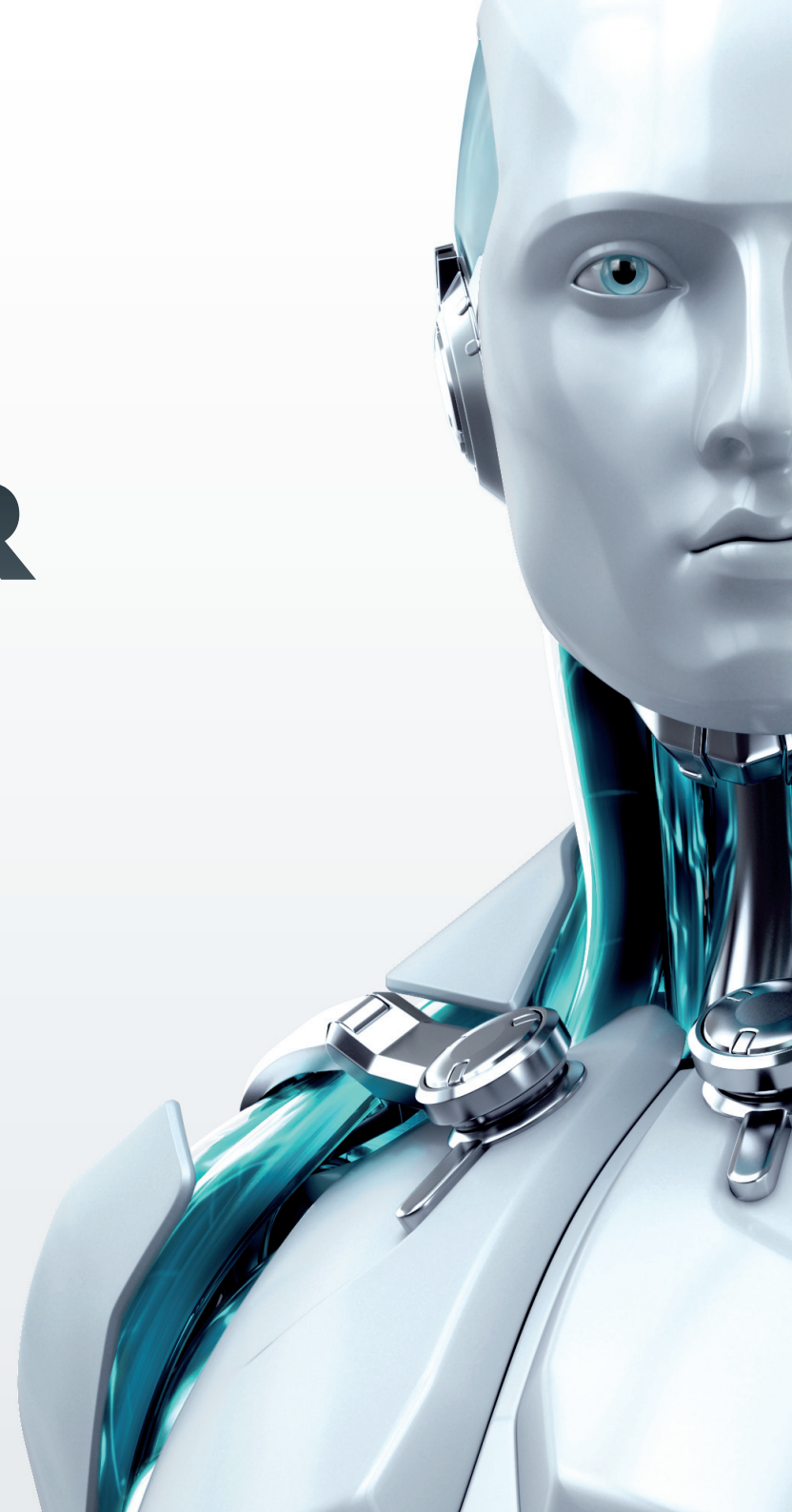


# ESET **REMOTE ADMINISTRATOR**

Features  
Business Perspective



[www.eset.com](http://www.eset.com)



## Administrator Effectiveness

FEATURE	WHAT IT DOES	WHAT'S THE BENEFIT
<b>Centralized Management</b>	Lets you manage all ESET security solutions software from a central management tool	Keep IT budgets under control - with ESET Remote Administrator for management of past, present and future ESET solutions. Easily manage all endpoints, servers, smartphones and even virtual machines from a single console, no matter if you are running Windows, Mac or Linux systems.
<b>Role-based Management</b>	Assigns different privileges to different ESET Remote Administrator users Audit users with ESET Remote Administrator Enforce password complexity	Role based administration makes it easy for your IT team to delegate responsibilities among different individuals or groups. Detailed audit logs simplify compliance reporting.
<b>Dynamic Client Groups</b>	Enables you to create static and dynamic clients groups and using different parameters for populating the groups	The security rules are easily adjustable for different groups of employees. Dynamic groups can be created on-the-fly based on specified conditions to simplify identification and remediation of endpoints that trigger security events.
<b>Event Notifications</b>	Allows you to specify log and report parameters or choose from more than 50 templates available for different system/client events Gives you the option to set threshold for event notifications	Save your IT team's time by prioritizing notifications and setting up what type security event is important, how detailed it should be and in what interval it should be reported, so they get actionable information without being overloaded.
<b>Remote Installation</b>	Performs remote installation of ESET software to multiple endpoints at once	Have your IT manage endpoint security with a few clicks by deploying ESET security software on all endpoints from one central location.
<b>Export/Import Policies</b>	Enables you to import/export/edit policies in XML	Save time and prevent errors by defining the configuration settings once, and then exporting and applying them to desired endpoints or groups.
<b>Remote Module Switch</b>	Remotely activates or deactivates protection modules installed on a given client, including firewall, anti-stealth, real-time file system protection, web-access and e-mail client protection  Automatic re-activation can be set for: 10 min, 30 min, 1 hour, 4 hours or never	Reduce potential downtimes during system maintenance by remotely enabling and disabling security modules.

## Reporting

FEATURE	WHAT IT DOES	WHAT'S THE BENEFIT
<b>Real-time Web Dashboard</b>	Ensures complete oversight of the company network and lets you check the security status from anywhere	Oversee the security status of the entire network with real-time information about the server load and security. You can access critical information from outside the company network via web-based dashboard.
<b>Multiple Log Formats</b>	Lets you save logs in common formats - CSV, plain text, Windows event log - readable by SIEM tools Stores logs on endpoint side for later harvesting	Take advantage of data mining functions, making correlations of security events easy and quick. Make the data readable to 3rd party Security Information and Event Management (SIEM) tools.
<b>Device Control Reports</b>	Device Control Reports deliver comprehensive logs and reports for all device-related events	Monitor the usage of removable media and devices across the entire company, keeping all important information in one place.
<b>RSA enVision Support</b>	Integrates with the RSA enVision SIEM tool via a plug-in	Support for RSA enVision ensures ease of integration with this popular 3rd party SIEM tool.
<b>ESET SysInspector</b>	Performs in-depth analysis of endpoint systems to identify possible security risks	Give your IT admins all the tools to easily find potential security risks and take preventive actions proactively.

## Update Management

FEATURE	WHAT IT DOES	WHAT'S THE BENEFIT
<b>Randomized Task Execution</b>	Enables you to set random time periods for executing scheduled security tasks	Prevent system slowdowns due to delayed response from servers or AV storms on virtual endpoints. This feature ensures that simultaneously scheduled security tasks will not cause network slowdowns or negatively impact its traffic.
<b>Postponed Updates</b>	Provides an option to download from 3 specialized update servers: pre-release (beta users), regular release (regular users) and postponed release (approx. 12 hours after regular release)	Keep the company online systems working smoothly 24/7. Prevent outages of critical systems due to antivirus updates or any events that could impact the company's operations.
<b>Local Update Server</b>	Saves company bandwidth by downloading updates only once to a local mirror server  Secured (HTTPS) communication channel is supported	Keep the connection available for work-related online services, by keeping the antivirus updates traffic to a minimum.
<b>Faster Database Access</b>	Provides an optimized and streamlined database access to endpoint security-related data	Quick database response means faster reporting and data aggregation across your endpoints, increasing IT productivity.
<b>Database Cleanup</b>	Allows you to set database storage attributes such as time period and threshold values for entries to be kept in database	Store only security logs that are important and up-to-date, ensuring a tidy database, without unnecessary server slowdowns.
<b>Microsoft NAP Support</b>	Deploys server side System Health Validator (SHV) plug-in and client side System Health Agent (SHA)  Grants full network access for compliant clients and limited/no network access for non-compliant clients	Control access to network resources based on a client computer's identity and compliance with corporate governance policy. Microsoft Network Access Protection (NAP) plug-in allows full integration with your company's compliance policies.